



70A MOUNTGROVE RD N.5  
Proposed Front Elevation  
Drwg no H/CJ 03 REV. B

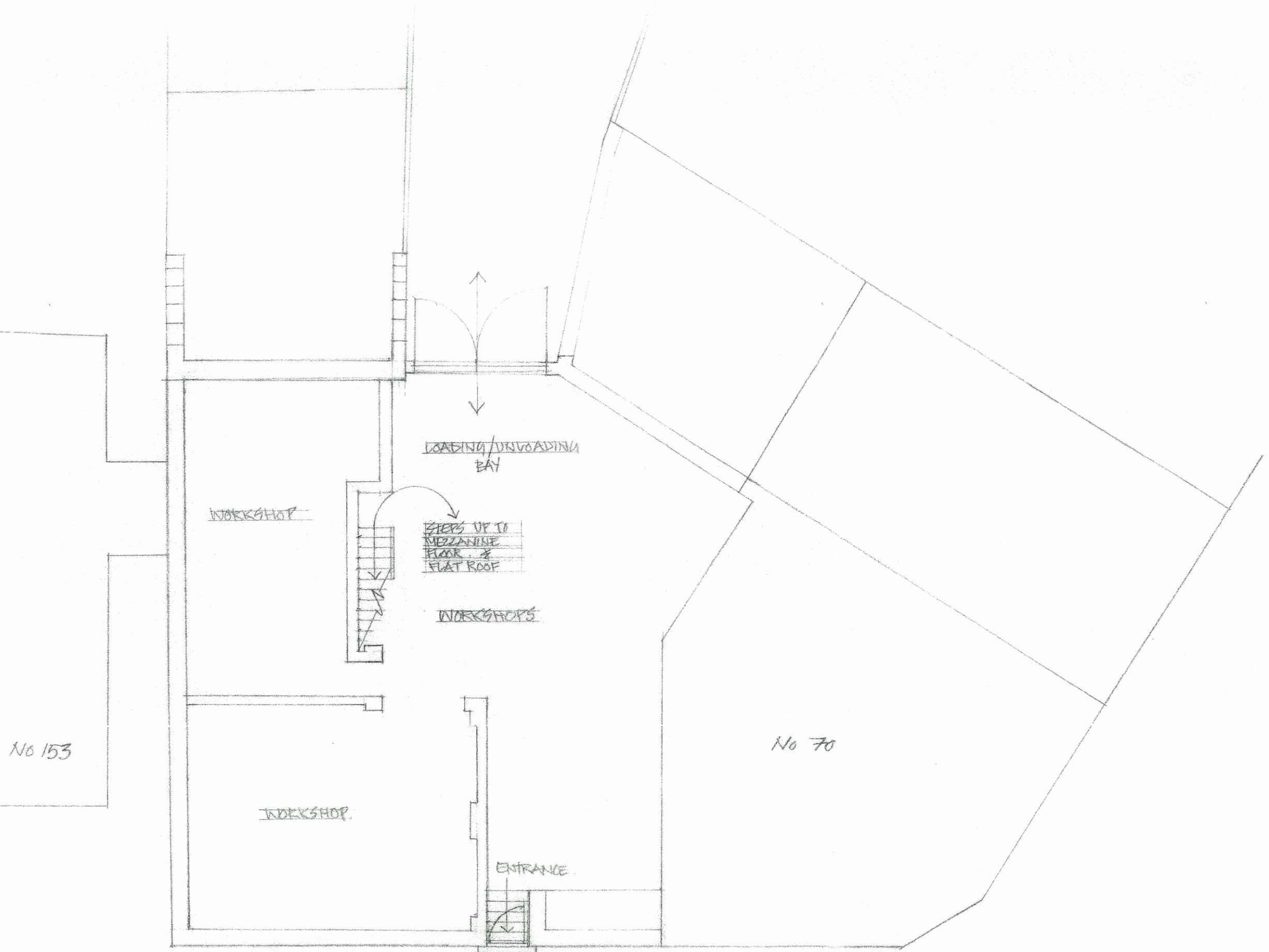
AMENDED





PREVIOUS SCHEMES





70(A) Existing Ground Drwg no H/CJ/012



70A Existing First Floor Drwg no H/CJ 013





70A — Mountgrove Rd  
Existing Front Elevation Drwg no H/CJ01

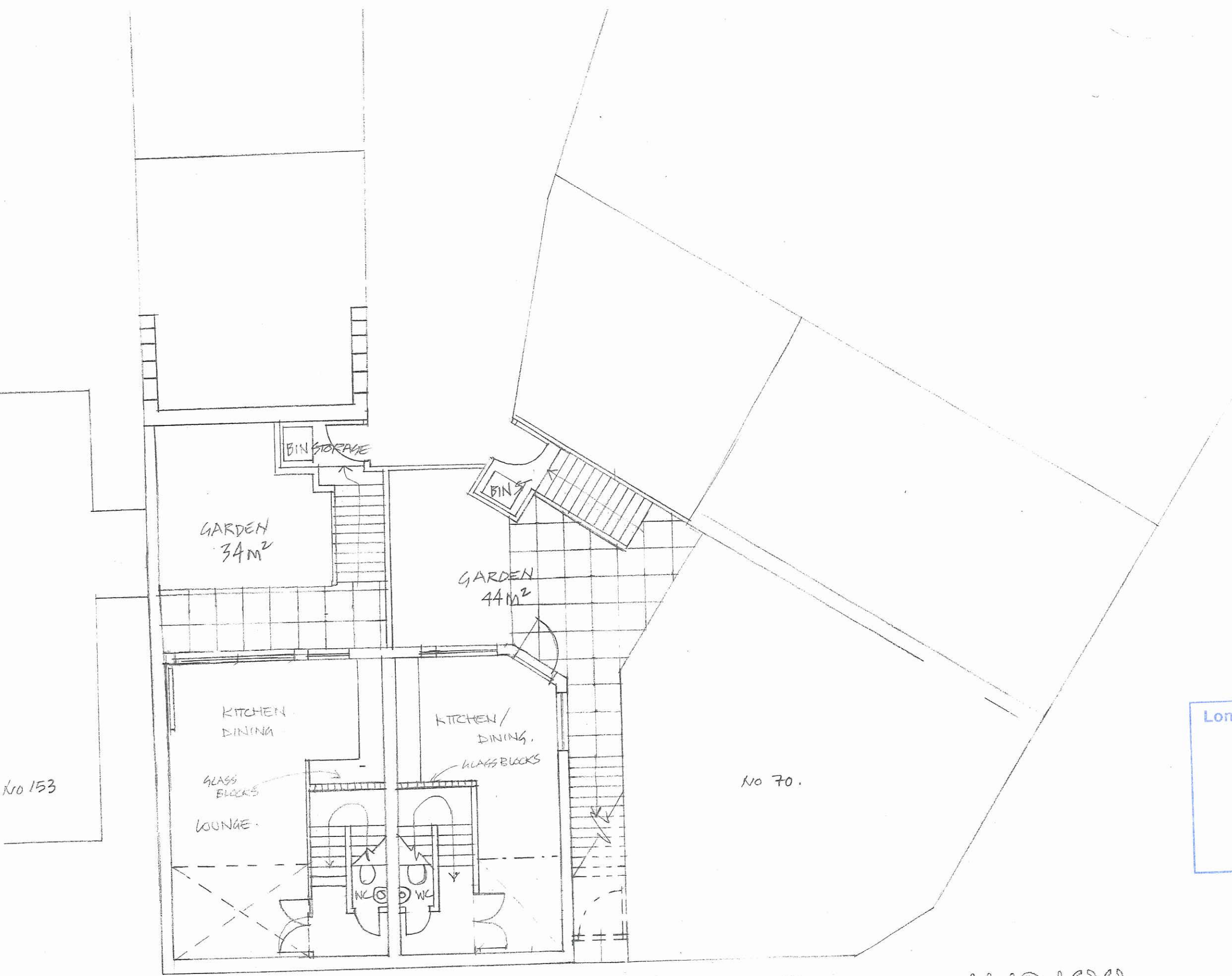




70A Rear of Mountgrove Rd


Existing Rear Elevation Drwg no H/CJ02

LONDON BOROUGH OF HAVINGHAM  
PLANNING DEPARTMENT  
PLANNING - RECEIVED



No 153

No 70.

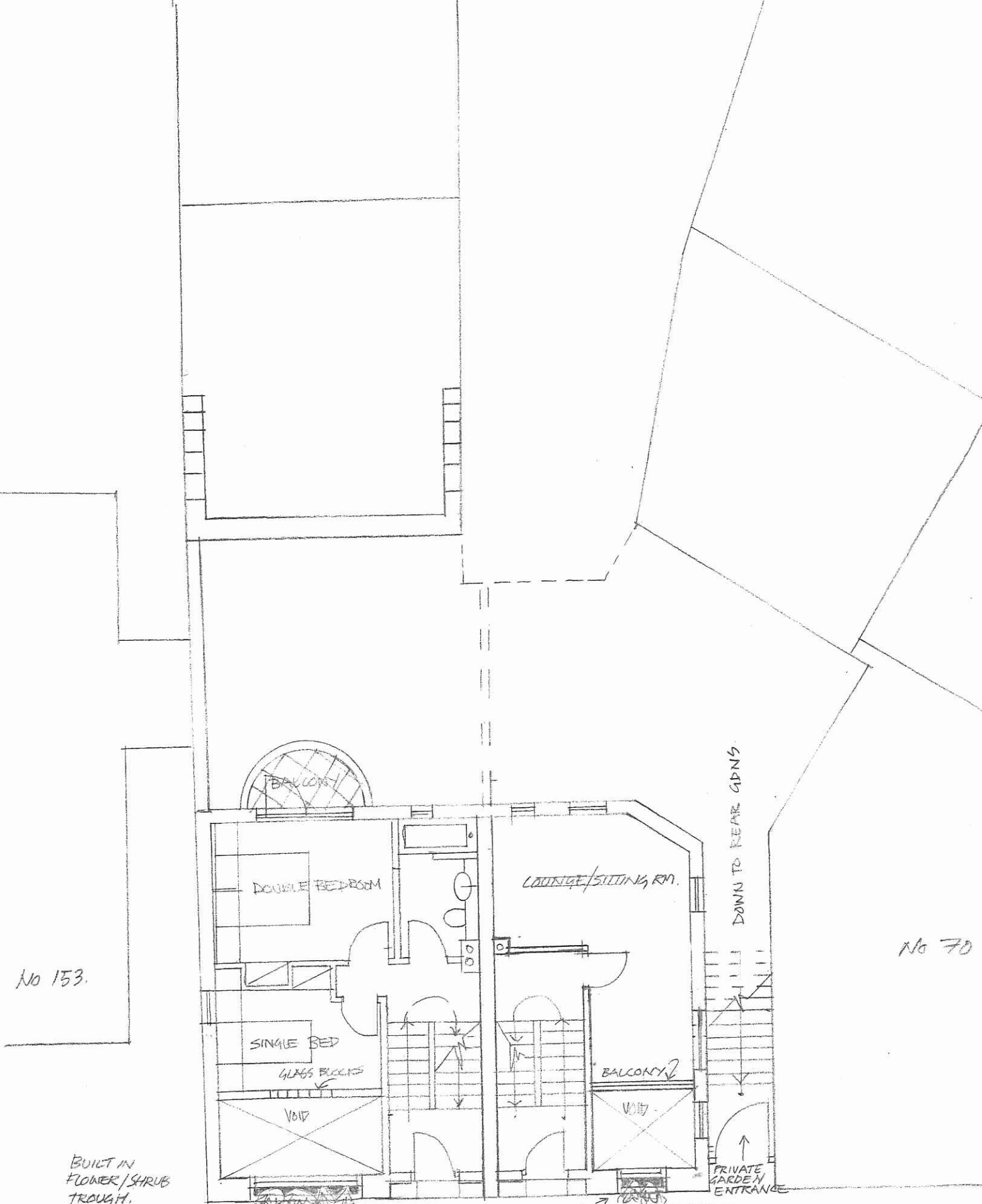
London Borough of Hackney  
  
 - 3 OCT 2008  
 Planning - Received

70A Lower Ground Proposed Drwg no H/CJ08





London Borough of Hackney  
  
 - 3 OCT 2008  
 Planning - Received

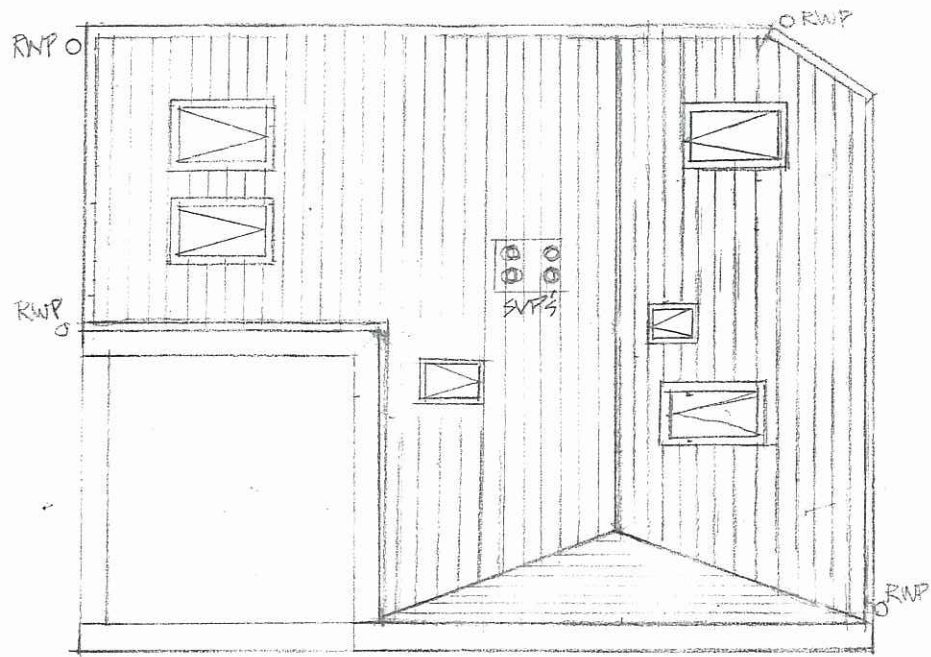


No 70

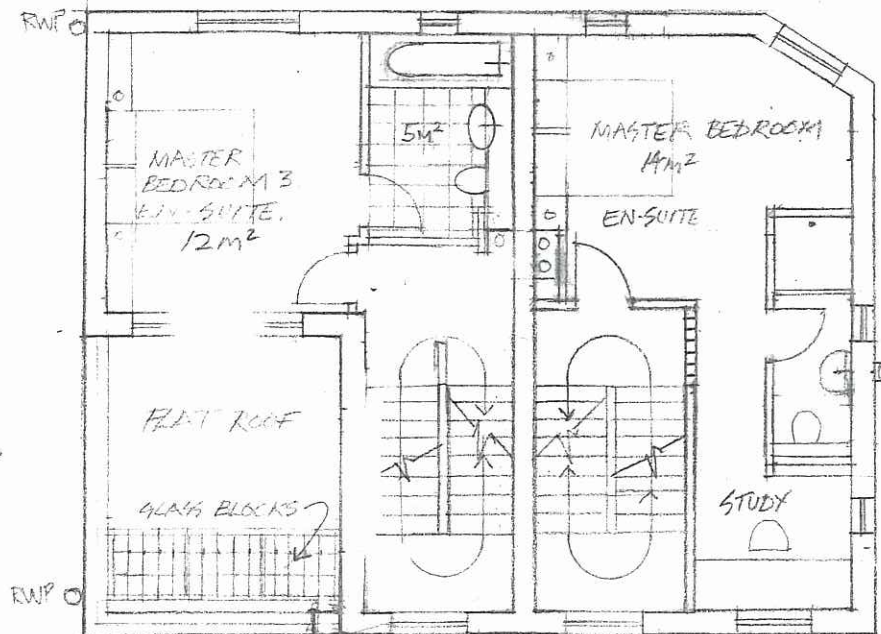
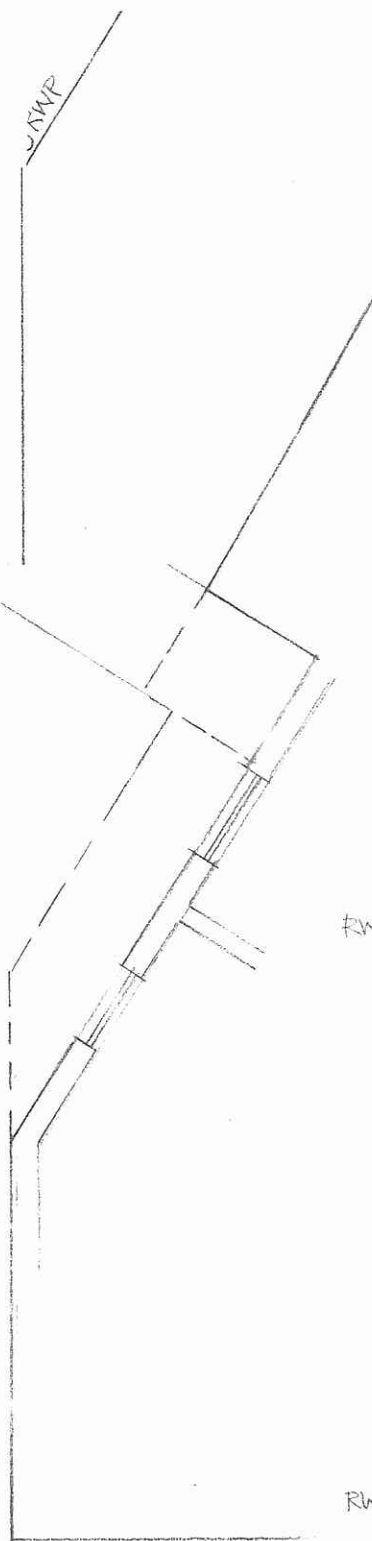
70A Upper Ground Proposed Drwg no H/CJ(07) REVISION. A

**AMENDED**

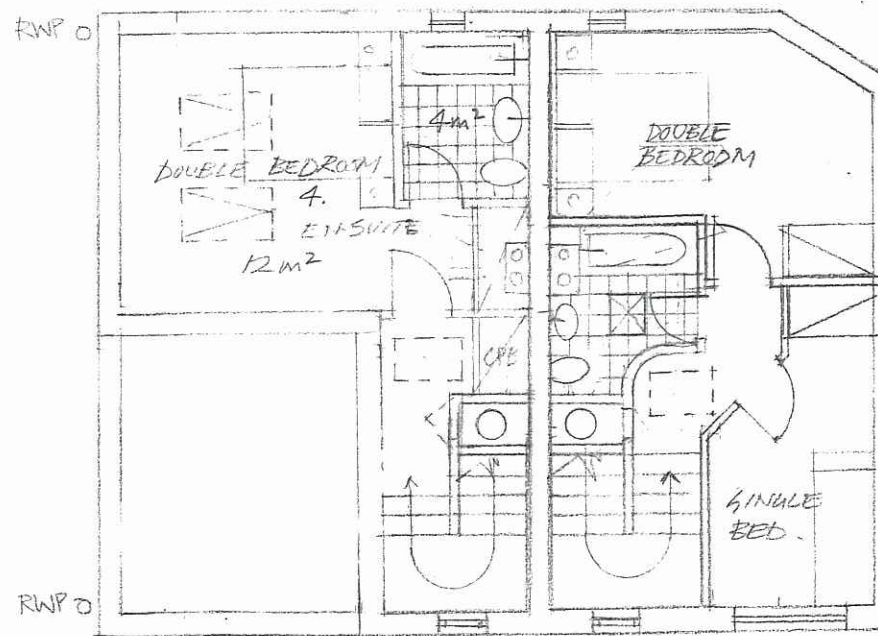




Roof Plan



1st Floor

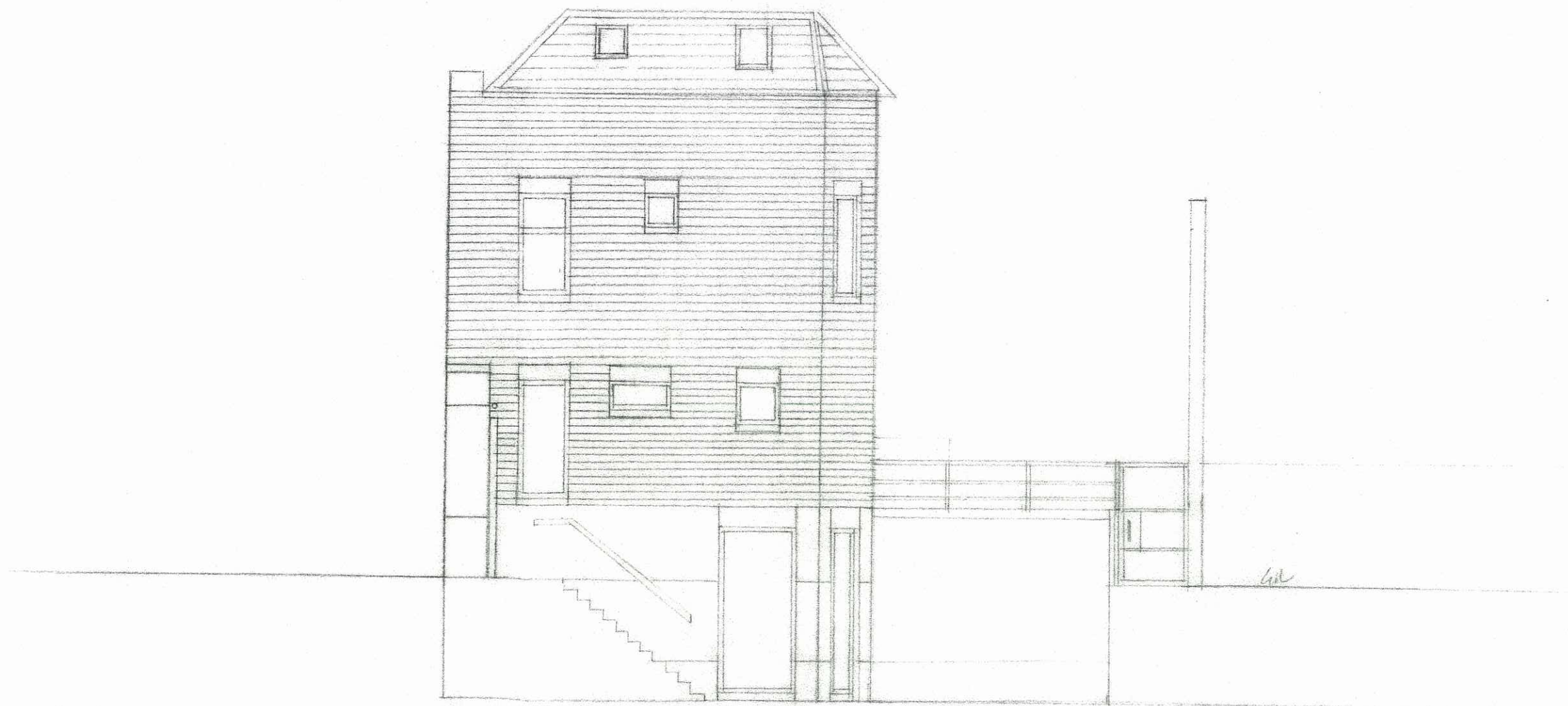


2nd Floor

London Borough of Hackney  
 Hackney  
 - 3 OCT 2008  
 Planning - Received

Proposed Drwg No H/CJ09

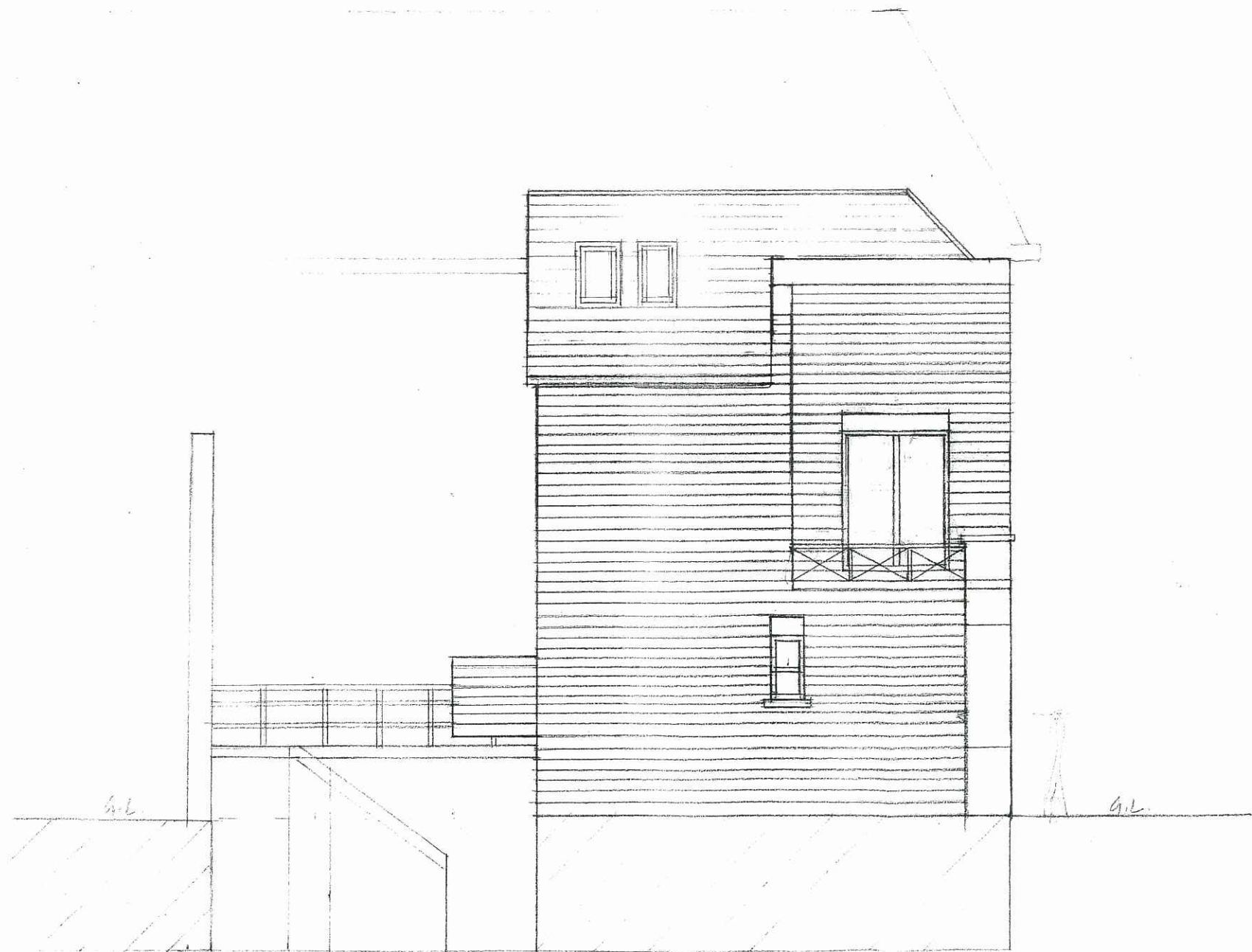




Drwg no H/CJ04

Proposed East Elevation





AMENDED

Proposed West Elevation

Drwg no H/CJ05 REV A





No 70

No 153.

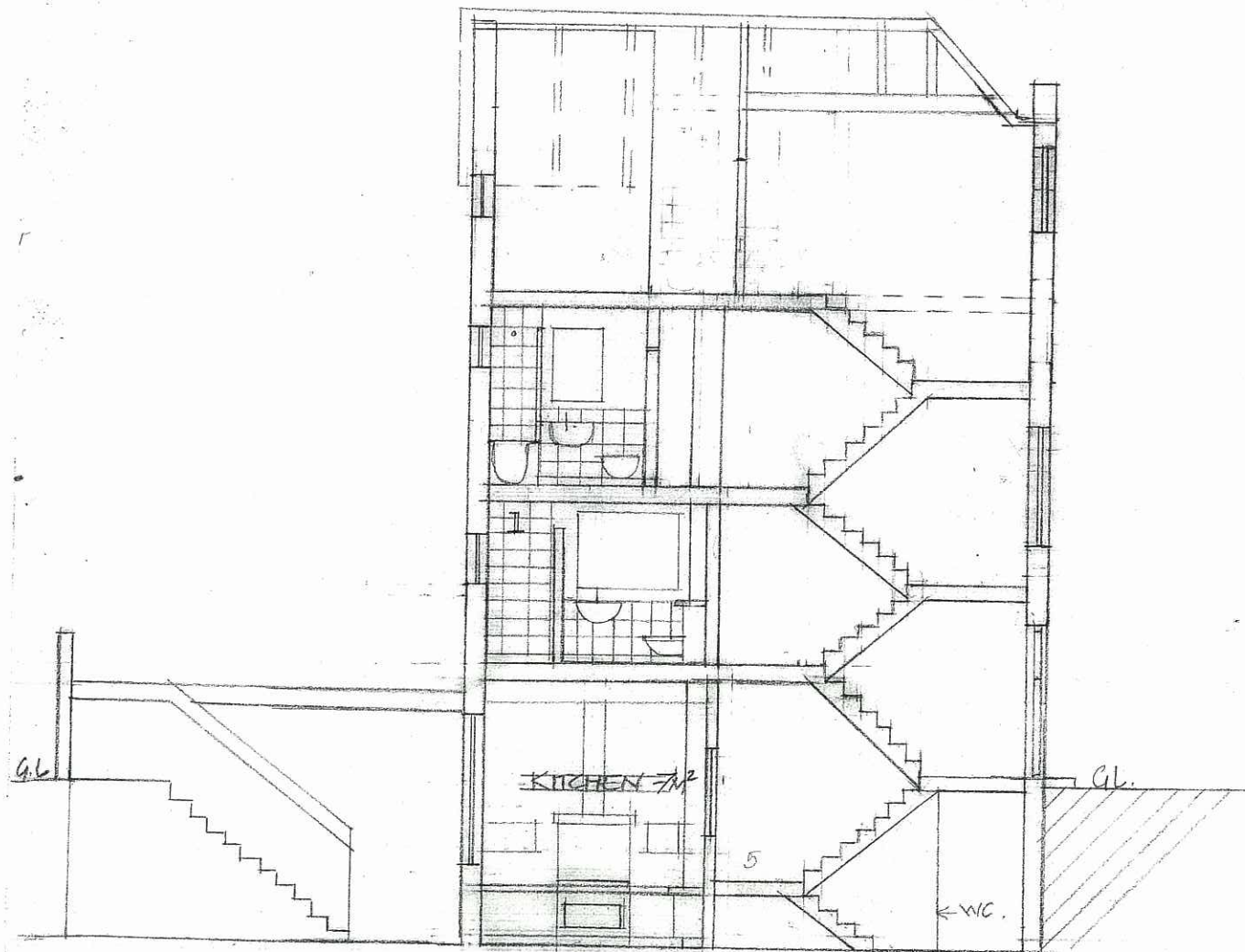
Rear 70a

Drwg no H/CJG REV A.

Proposed

AMENDED





Proposed cross section  
stairwell



Proposed cross section  
Drwy no 010 REV A

AMENDED